

UniSettle 5.0 / UniPile 6.0

Download – Installation - Activation

This document is divided into 8 sections:

- 1.0 Minimum System Requirements
- 2.0 Downloading and Installing UniSetup 1.0
- 3.0 Using UniSetup 1.0
- 4.0 Application Activation
- 5.0 Connected Users
- 6.0 End-User License Agreement
- 7.0 Documentation
- 8.0 Demo Examples

1.0 Minimum System Requirements

The following system requirements are required to download and install UniSetup 1.0, UniSettle 5.0, and UniPile 6.0. Administration privileges are not required to execute any of our applications, but they are required to install them in your system. Other minimum requirements are listed below.

- Windows 10 Professional 64-bit with latest service packs applied
- A live Internet connection
- Internet access <https://s3.amazonaws.com/> and <https://www.unisoftgs.com/> using TLS 1.2
- 1920 x 1080 pixels, 32-bit color display
- A mouse or equivalent pointing device
- Microsoft .Net Framework 4.8 or later
- Microsoft Access Database Engine 2010 or later
- Microsoft Word or an equivalent Rich Text Format (.rtf) reader
- Microsoft Excel or an equivalent Comma-Separated Value (csv) reader
- Adobe Reader or an equivalent Portable Document Format (pdf) reader

2.0 Downloading and Installing UniSetup 1.0

The download and installation of UniSettle 5.0 and UniPile 6.0 is performed by our UniSetup software available at <https://download.unisoftgs.com/UniSetup1.msi>. The MSI format (Microsoft Software Installer) is a file format developed by Microsoft to install, maintain, and remove software on Windows systems. Once installed, UniSetup 1.0 is used to download and install the latest releases of UniSettle 5.0 and UniPile 6.0.

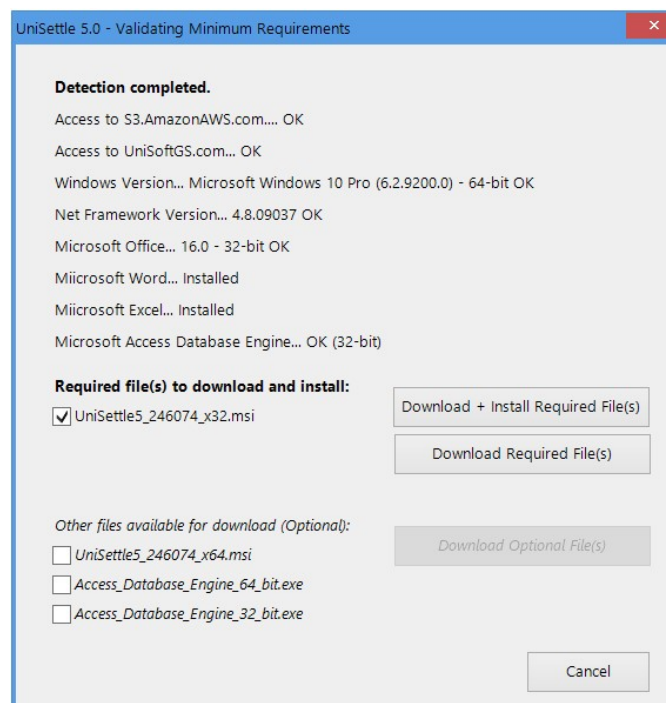
3.0 Using UniSetup 1.0

Our UniSetup download and installation manager provides the option to download, install, and maintain the latest releases of UniPile 5.0 and UniPile 6.0.

UniSettle and UniPile come in two versions: 32 and 64-bit. Computers running the 32-bit version of Microsoft Office must install the 32-bit version. Computers running the 64-bit version of Microsoft Office must install the 64-bit version.



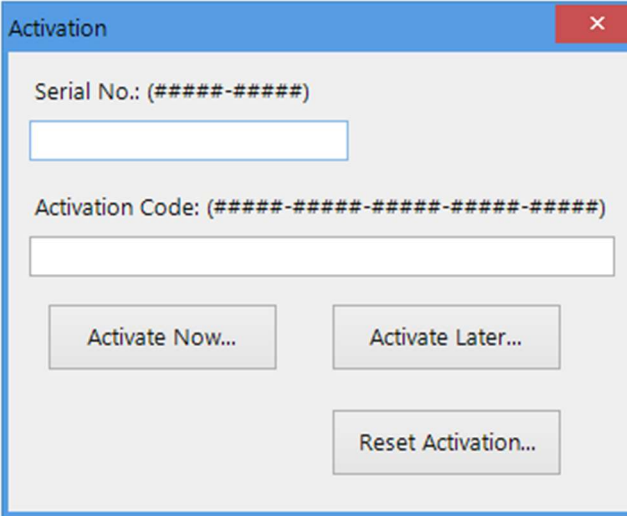
After selecting the application of your choice, UniSetup will validate the target system for the minimum requirements and install the version best suited for your computer.



You may elect to use UniSetup to perform the installation or simply use it to download the necessary files for manual installation. Our installation package is an MSI file that was built using Advanced Installer. MSI stands for Microsoft Installer and it's the Windows standard installer format. It uses msiexec.exe to install the application and accepts the standard MSI parameters such as /quiet or /passive. Detailed information on the available command lines is available at <https://www.advancedinstaller.com/silent-install-exe-msi-applications.html>.

4.0 Application Activation

Activation of UniSettle and/or UniPile is performed when opening the application for the first time. Until the application is successfully activated, you will be asked to enter the 10-digit serial number and 25-digit activation code received at the time of purchase.

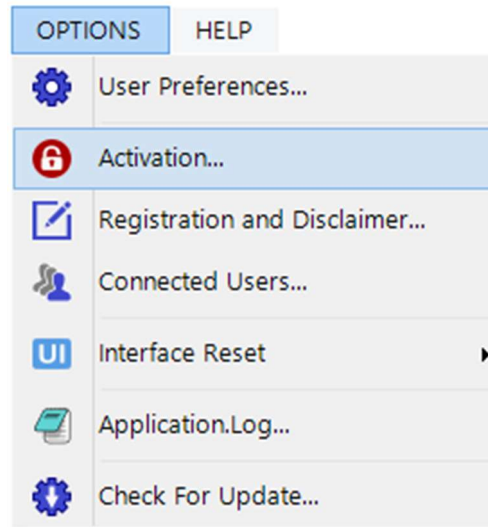
The image shows a Windows-style dialog box titled "Activation". It has a blue title bar with a close button (X) in the top right corner. The dialog box contains two input fields: the first is labeled "Serial No.: (#####-#####)" and the second is labeled "Activation Code: (#####-#####-#####-#####-#####)". Below these fields are three buttons: "Activate Now..." on the left, "Activate Later..." on the right, and "Reset Activation..." centered below the other two. The dialog box has a light gray background and a blue border.

Selecting "Activate Later..." will run the application as a demo version. The demo version is the exact same as the full professional version except that only the demo examples installed with the application can be analyzed. Other options such as saving and importing features are also disabled.

Selecting "Reset Activation..." will delete all activation files and reset the application to DEMO.

You may install the software on any number of computers or systems and share your license credentials with any number of users within your organization. For obvious reasons, sharing your license credentials (serial number and activation code) with users outside your organization is not recommended.

The option to activate your application at another time is available under the main OPTIONS menu.



5.0 Connected Users

Seats occupancies are validated by Amazon Web Services (AWS). As such, an Internet connection is required to run the application at all times. The amount of data transferred in the process of validating the license is negligible at less than 1KB.

At anytime you may visit the "Connected Users..." feature located under the main OPTIONS menu to view the list of the users currently occupying a seat. Remotely terminating the application process via Windows task manager will not release the seat and may result in loss of data for this user.

Connected Users

#	Domain	Machine	User	Login Time (Local)	Login Time (UTC)
1	WKCPINC	Desktop08	Peter K.	2025-02-24 12:38:11 PM	2025-02-24 5:38:11 PM
2	WKCPINC	Laptop02	Cindy R.	2025-02-24 3:16:35 PM	2025-02-24 8:16:35 PM
3	WKCPINC	Desktop05	John T.	2025-02-24 2:33:23 PM	2025-02-24 7:33:23 PM
4	-	-	-	-	-
5	-	-	-	-	-

IMPORTANT: Remotely terminating process via task manager will not disconnect user and may result in loss of data.

Serial Number: 45511-11539

Total number of seats: 5

Number of occupied seats: 3

Number of available seats: 2

Copy...

Exit

6.0 End-User License Agreement

Our “End-user license agreement” for UniSettle 5.0 and UniPile 6.0 is available at https://download.unisoftgs.com/License_Agreement.pdf.

7.0 Documentation

A document titled ‘What’s New’ describing the many new features is available under the main HELP menu of UniSettle 5.0 and UniPile 6.0. These documents may also be obtained by visiting:

- https://download.unisoftgs.com/UniSettle5_Whats_New.pdf
- https://download.unisoftgs.com/UniPile6_Whats_New.pdf

The engineering concepts and equations used in UniSettle 5.0 and UniPile 6.0 were obtained from the January 2024 edition of “Basic of Foundation Design” by Bengt H. Fellenius, Dr. Tech., P.Eng. This textbook is available under the main HELP menu. You may also obtain this textbook by visiting <https://download.unisoftgs.com/RedBook.pdf>.

8.0 Demo Examples

UniSettle 5.0 and UniPile 6.0 come pre-loaded with a series of simple project files to demonstrate some of the features. These example files are listed under the main FILE menu.

